

MarkWare™ Facility Identification Software



MarkWare™ Software Covers All Your Safety and Facility Identification Needs in One Powerful Package

- Use your PC to quickly design professional looking signs and labels
- Print directly to a Brady labeling system or most Windows® inkjet/laser printers
- Use preformatted templates provided for quick and easy label creation
- Or freely customize label layouts to your own specifications
- Over **1,000 safety symbols** and industrial pictograms included
- **2,000 chemical database** for creating OSHA Right-to-Know labels
- Import logos, photos and other graphics in **9** different file formats
- Create bar codes using **15** different symbologies
- Complete drawing toolkit (hot shapes, fill patterns, freeform lines, etc.)
- Link label contents to information stored in spreadsheets and databases
- Use any font on your PC (special pipe marker font also included)
- User interface can be displayed in 12 languages, including Spanish

Catalog Number	Description
20700	MarkWare™ Software Kit (regular price)
20711	Software & Laminating Kit ²

² See p. 230 for details on the MarkWare™ Software & Laminating Kit

³ The Labelizer® PLUS operating system must be Version 3.02 or higher. Order part number 20702 if you need to upgrade your Labelizer® PLUS printer. Includes cable kit.



► MarkWare™ System Requirements:

- PC running Windows® 2000 or XP
- 486 DX / 33 MHz or better processor
- 32 MB RAM (128 MB recommended)
- 90 MB available hard disk space
- 256-color, 640 x 480 pixel or better display
- CD-ROM drive (for installing software)

MarkWare Facility Identification Software makes these BRADY Printers even more powerful!



GlobalMark™

Industrial Label Maker



PowerMark®

Sign and Label Maker



Available 2007

MiniMark™

Industrial Label Printer



HandiMark®

Also works with:



Labelizer® PLUS*

Industrial Labeling System

*Machines no longer available.

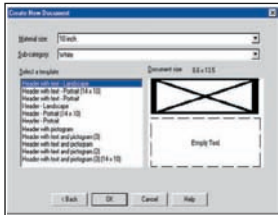
► Inkjet / laser printer users!

- You can improve the performance of inkjet/laser output by printing on Brady sign, label and tag blanks (see p. 230-).
- We also strongly recommend that you laminate your output (see p. 225-226).
- Be sure to check out the rigid sign blanks on pg226

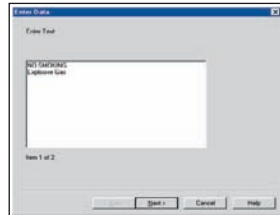
What Can MarkWare™ Software Do for You?

► Preformatted Sign & Label Templates

- MarkWare™ software provides templates for a broad range of industrial sign and label applications, including OSHA/ANSI safety signs, equipment labels, maintenance and quality control tags, pipe markers, asset ID labels, DOT shipping placards, RTK chemical labels, and more!



Pick a template



Type in the legend



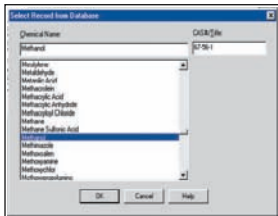
Select a sign header



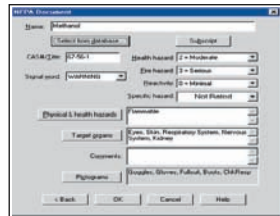
You are ready to print!

► Right-to-Know Chemical Labeling Application

- MarkWare™ software contains a database covering 2,000 commonly used chemicals as a reference for creating OSHA RTK-compliant labels



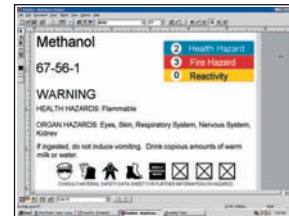
Select a chemical



Review label information



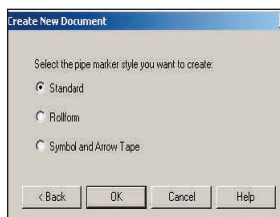
Insert into NFPA format



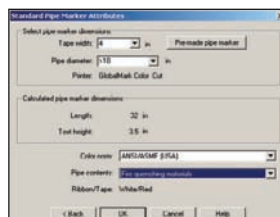
Or Brady Color Bar format

► Pipe Marker Application

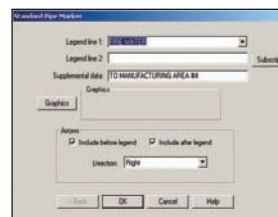
- Pipe marker application makes creating ANSI/ASME-compliant pipe markers a snap!



1. Select type of pipe marker



2. Select size and format



3. Enter text and arrows



4. Pipe marker is done!

► Industrial Safety Symbols Library

- MarkWare's built-in library gives you ready access to over **1000 !!** high-quality, scalable safety symbols and industrial pictograms.



Warning



Prohibition



Mandatory



First Aid



Fire Safety



Haz Chem



Public Info.



Tools



English and Foreign Language Headers



MarkWare™ Software & Laminating Kit



The Laminating Kit includes:

- MarkWare™ Facility Identification Software
- Blanks Starter Kit (see below for details)
- BLS 850 portable desktop laminator - works in seconds without electricity, heat or messy chemicals (see p. 225 for details)
- 100 snap-in grommets

Catalog Number

20711

Sign & Label Blanks for MarkWare™ Software



- Sign blanks are made of durable polyester (B-744)
- Permanent, pressure sensitive adhesive backing
- Compatible for use with laser and inkjet printers

Blanks without Preprinted Headers - 25 sheets/pkg.

	BLANK	BLANK	BLANK
1 3/4" x 2 1/2" (15 labels/sheet)	12834	12832	—
3 1/2" x 5" (4 labels/sheet)	12900	12903	12926
5" x 7" (2 labels/sheet)	12901	12904	12925
7" x 10" (1 label/sheet)	12902	12905	12924
Variety Packs*	12916	12915	12928

OSHA Sign Blanks - 25 sheets/pkg.

	⚠ DANGER	⚠ CAUTION	NOTICE	⚠ WARNING	SEGURIDAD PRIMERO
1 3/4" x 2 1/2" (15 labels/sheet)	12833	12831	—	—	—
3 1/2" x 5" (4 labels/sheet)	12906	12909	12912	12923	13029
5" x 7" (2 labels/sheet)	12907	12910	12913	12922	13028
7" x 10" (1 label/sheet)	12908	12911	12914	12921	13027
Variety Packs*	12917	12918	12919	12927	12942

ANSI Sign Blanks - 25 sheets/pkg.

	⚠ DANGER	⚠ CAUTION	NOTICE	⚠ WARNING
1 3/4" x 2 1/2" (15 labels/sheet)	12870	12874	—	—
3 1/2" x 5" (4 labels/sheet)	12873	12877	12880	12883
5" x 7" (2 labels/sheet)	12872	12876	12879	12882
7" x 10" (1 label/sheet)	12871	12875	12878	12881
Variety Packs*	15279	15280	15281	15282

*All Variety Packs contain: 10 - 7" x 10" sheets; 5 - 5" x 7" sheets; 10 - 3 1/2" x 5" sheets.

Spanish Sign Blanks - 25 sheets/pkg.

	PELIGRO	PRECAUCION	AVISO	ADVERTENCIA	SEGURIDAD PRIMERO
8.8 cm x 12.7 cm (4 letreros/hoja)	12936	12937	12938	13039	13023
12.7 x 18 cm (2 letreros/hoja)	12933	12934	12935	13043	13022
17.7 x 25.4 cm (1 letrero/hoja)	12930	12931	12932	13042	13021
Paquetes mixtos *	12939	12940	12941	13033	13035

*All Variety Packs contain: 10 - 7" x 10" sheets; 5 - 5" x 7" sheets; 10 - 3 1/2" x 5" sheets.

Blanks Starter Kit includes assortment of:

- Sign and label blanks (5 sheets)
- Tag blanks (5 sheets)
- RTK label blanks (5 sheets)

Catalog numbers included (1 sheet each):

- Sign blanks: 12906, 12908, 12910, 12911, 12914
- Tag blanks: 12770, 12771, 12777, 12783, 12788
- RTK blanks: 59240, 59242, 59248, 59254, 59255

Catalog Number

64650

Size

1 3/4" x 2 1/2"

3 1/2" x 5"

5" x 7"

7" x 10"

Variety Packs

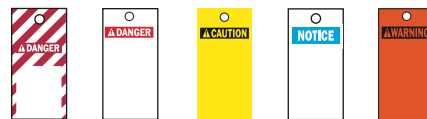
Tag Blanks for MarkWare™ Software

- Tag blanks are made of durable polyester (B-841)
- Compatible for use with laser and inkjet printers
- Meets OSHA 50 lbs. pull requirements when used with Brady's plastic grommets sold on page 209.



OSHA Tag Blanks

4" x 2" (8/sheet)	12770	12776	—	—	—
5½" x 2½" (6/sheet)	12771	12777	12782	12788	12794
8½" x 4" (2/sheet)	12772	12778	12783	12789	12795



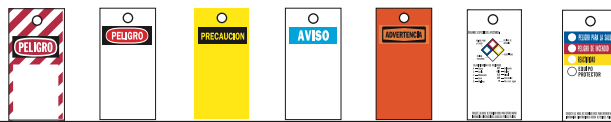
ANSI Tag Blanks

4" x 2" (8/sheet)	12884	12887	—	—	—
5½" x 2½" (6/sheet)	12885	12888	12890	12892	12894
8½" x 4" (2/sheet)	12886	12889	12891	12893	12895



Other Tag Blanks

4" x 2" (8/sheet)	12808	—	—
5½" x 2½" (6/sheet)	12809	12800	12804
8½" x 4" (2/sheet)	12810	12801	12805



Spanish Tag Blanks

10 x 5 cm (8/hoja)	12773	12779	—	—	—	—
14 x 7 cm (6/hoja)	12774	12780	12784	12790	12796	12802
21,6 x 10 cm (2/hoja)	12775	12781	12785	12791	12797	12803



25 Sheets/pkg

Size

4" x 2"
5½" x 2½"
8½" x 4"

Right-To-Know Label Blanks for MarkWare™ Software



- Available in vinyl (B-745) and paper (B-746)
- Permanent, pressure sensitive adhesive backing
- Compatible for use with laser printers only

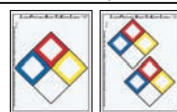
Brady Color Bar Format - 25 sheets/package



Label Size	7" x 10"	5" x 7"	3½" x 5"	2" x 2"
Labels/sheet	1	2	4	15
Vinyl	59240	59241	59242	59243
Paper	59244	59245	59246	59247

NFPA Diamond Format - 25 sheets/package

Diamond Only

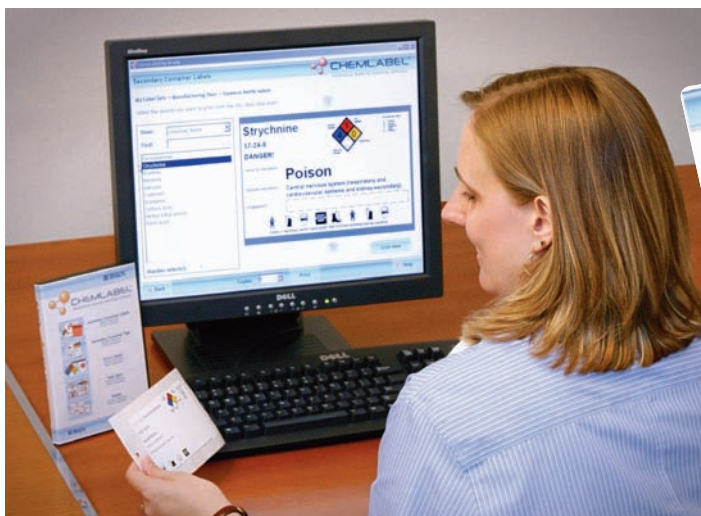


Diamond with Hazard Classification



Label size	5¾" x 5¾"	4" x 4"	2" x 2"	1" x 1"	7" x 10"	5" x 7"	3½" x 5"	2" x 2"
Labels/sheet	1	2	15	35	1	2	4	15
Vinyl	59249	59250	59251*	59252	59248	59253	59254	59255
Paper	59257	59258	59259*	59260	59256	59261	59262	59263

ChemLabel™ Hazardous Material Labeling Software



Brady's ChemLabel™ Software helps keep employees safe by ensuring properly labeled chemicals

Poorly and inaccurately labeled chemicals and other dangerous materials represent potentially serious safety problems. Brady's new ChemLabel™ Hazardous Material Labeling Software will make it easy to create and print labels for hazardous substances.

This Windows-based software package offers a complete set of tools to handle virtually any hazardous material labeling application.

Use anywhere chemicals are labeled!

ChemLabel™ Hazardous Material Labeling Software is an extremely useful tool for factories, hospitals, laboratories, or anywhere chemicals and other hazardous materials are used and stored.



Catalog Number
50987

**ChemLabel™
Hazardous Material
Labeling Software
makes these
BRADY Printers
even more powerful!**



GlobalMark™
Industrial Label Maker



PowerMark®
Sign and Label Maker



Available 2007
MiniMark™
Industrial Label Printer

Also works with:



HandiMark®
Portable Label Maker



Labelizer® PLUS*
Industrial Labeling System
*Machines no longer available.



VersaPrinter™*
Label and Sign Maker
Also works with laser and inkjet printers.

ChemLabel™ Hazardous Material Labeling Software



Improve emergency response time by properly identifying tanks and vessels.



Produce NFPA or Color Bar Labels.

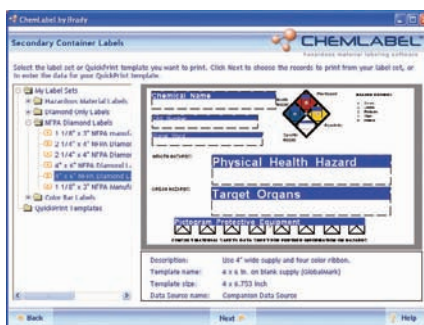


Produce RTK Chemical Labels.

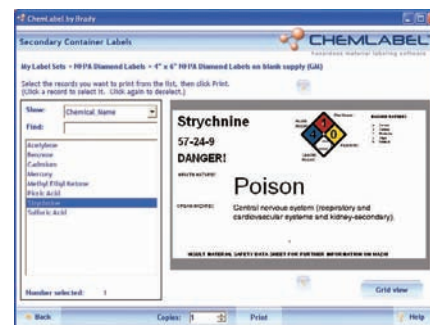
A SAFER ENVIRONMENT IN THREE EASY STEPS!



STEP ONE
Select a Document Type



STEP TWO
Choose a Layout



STEP THREE
Select Chemicals and Print

CHEMLABEL™ FEATURES & BENEFITS INCLUDE:

- **On-screen wizards** to guide you through the process of linking data from a chemical database to a label layout, ensuring that the chemical labels you need contain the right information
- The option to use the **Genium Companion Database**, containing over 2,000 commonly used chemicals, **or your own chemical database**
- A complete stock of **pre-designed templates** and a full range of editing/drawing tools, making it easy to print chemical labels in the exact layout desired
- A connection to **Brady industrial printers and supplies**, ensuring accuracy and durability
- An **extensive online help system** providing detailed information and instructions
- Patent No. 5,823,689

USER REQUIREMENTS:

Pentium® processor, Windows® 98 with Internet Explorer 5.01, Windows® 2000 with Service Pack 1, Windows NT® 4 with Service Pack 6a, Windows® XP, 64MB of RAM, 175MB of available hard-disk space, 16-bit or greater video card, 800x600 or greater monitor resolution, CD-ROM drive



For more information on this exciting new product, visit the ChemLabel website at www.bradyid.com/chemlabel

SurfOnSigns™ Signs and Labels Database



With SurfOnSigns™ CD, thousands of pre-made signs and labels are just a click away!

Need Custom? No Problem.

- SurfOnSigns™ legends can be edited by you.
- Custom legends you create can be saved.
- Follow the step-by-step directions.
- Click and print!

¿Habla español? ¡Sí! ¡Sí!

- All legends ready-to-print in Spanish*
- Also available in bi-lingual format.

Parlez-vous Français? Oui! Oui!

- All legends ready-to-print in French*, too!
- Also available in bi-lingual format.

*Please note that the SurfOnSigns™ CD does not feature translation software and will not translate custom legends; all French and Spanish legends are provided by Brady.

Catalog No.
98200

Fast. Accurate. Amazing!

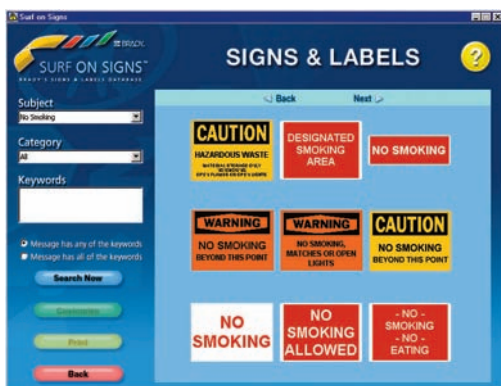
- Signs. Labels. Tags. Pipe Markers.
- Thousands of stock legends.
- High-speed search gives you instant access.
- Ready-to-print format is error-free, hassle-free.
- Just click and print.

Step-by-Step Simplicity.

- Connect your computer with your Brady printer.
- Pop SurfOnSigns™ CD into your computer drive.
- Follow the step-by-step directions.
- Just click and print.

All in the Format You Need.

OSHA and ANSI format signs and tags.
ANSI-ASME pipe makers.
And More—all ready to print!



Search from thousands of signs, labels, pipe markers or tags and print what you need directly to your Brady printer.



Translate any item in the database from English to Spanish, French or even bi-lingual... in a matter of seconds!

**SurfOnSigns™
Signs & Labels
Database Software
makes these
BRADY Printers
even more powerful!**

GlobalMark™

Industrial Label Maker

HandiMark®

Portable Label Maker

PowerMark®

Sign and Label Maker

MiniMark™

Industrial Label Printer

Labelizer® PLUS*

Industrial Labeling System

*Machines no longer available.

VersaPrinter™ *

Label and Sign Maker

Also works with laser and inkjet printers.



- Simply print error-free signs, labels, pipe markers and tags using SurfOnSigns™ database.
- Edit feature allows you to personalize and save the customized legend and have it available for future use.
- Translate feature allows you to print messages in English, French, Spanish or bi-lingual formats.
- Download upgrades at www.surfonsigns.com to keep your SurfOnSigns™ software up-to-date.

USER REQUIREMENTS: Pentium Processor; Windows 98 with Internet Explorer 5.01, Windows 2000 with Service Pack 1, Windows NT with Service Pack 6a, or Windows XP; 64MB of RAM; 50MB of available hard-disk space; 16-bit or greater video card; 800 x 600 or greater monitor resolution; CD-ROM drive

Lockout Pro™ Graphical Procedure Writing

Lockout Pro™ Graphical Procedure Writing Software

- The use of easy-to-follow procedures helps to prevent mistakes and makes lockout tasks more efficient, reducing downtime.
- Lockout PRO's intuitive user interface speeds you through the process of creating OSHA-compliant lockout procedures, tags and energy source labels.
- Allows you to insert digital photos so employees can locate the correct control points quickly
- Standardized formats promote easy understanding and consistent use of prescribed safe work practices
- Also includes complete user-editable energy control policy and employee training tools



Lockout-Tagout Posted Procedure


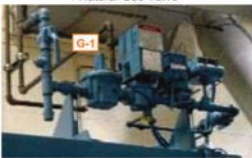
LOCKOUT PRO™
Graphical Procedure Writing Software

ID#: CMA-2 430266 Facility: Camden Road Location: Cell 135/143
Created: 7/23/2003 12:19:45 Description: OSH 400.000 BTU Oven, Serial #56000
Revised: 8/28/2003 4:51:17 PM

2 Lockout Points **Note:** This is an example of a Lockout Pro "Long Form". The long form lets you freely develop tags in the procedure and position photos next to the relevant instructions.

Lockout Application Process

1. Notify affected personnel. 2. Properly shut down machine. 3. Isolate all energy sources. 4. Apply lockout devices, locks, & tags. 5. Verify total de-energization of all sources.

Step #	Action	Info
1.	This machine generates extremely high temperatures. Leave door open for at least one hour to allow for proper cooling.	The door is located on the West side of the machine.
2.	The E-1 Disconnect is located on the Front side of the machine. Using a Lock, turn Disconnect to the off position and lock out at E-1.	 Main Control Panel
3.	The G-1 Valve is located on the Top side of the machine. Using a Ball valve (1.25 - 3 inch) lockout device, turn Valve to the off position and lock out at G-1.	 Natural Gas Valve
4.	Confirm that energy has been isolated by attempting to restart at the main control panel.	Main control panel is located on the west side of the machine.

Lockout Removal Process

1. Ensure all tools and items have been removed. 2. Confirm that all employees are safely located. 3. Verify that controls are in neutral. 4. Remove lockout devices and reenergize machine. 5. Notify affected employees that servicing is completed.

Brady Lockout PRO: Graphical Lockout Procedure Writing Software

Lockout PRO™ Output Options

- Print procedures to plain paper using conventional inkjet/laser printers. (See holders and binders on page 422 for posting procedures at the point of use.)
- For greater durability, print procedures, tags and energy source labels using Brady's GlobalMark™ Industrial Labeling System. Energy source labels can also be printed to Brady's HandiMark® Portable Label Maker.

Software Computer Requirements

PC

- Operating System: Microsoft® Windows® 2000/XP
- Memory and Monitor Resolution Processor: 1.2 GHz or greater
- Display Resolution: 1024 x 768 or greater
- 512 MB RAM

Server

- Operating System: Microsoft® Windows® 2000, Windows® 2003, or Windows® XP Professional
- Microsoft® Internet Explorer 6.0 or greater
- Server Processor: 1.2 GHz or greater (2.6 GHz recommended)
- 512 MB RAM (1G recommended)

Catalog No.	Description
LOPDESK1001	Lockout Pro Desktop Software
LOPCORP2001	Basic Enterprise Corporate License
LOPBASIC3001	Basic Enterprise 3 License
LOPADUSER1	Additional Administrator (adds 1 admin)
LOPADDSERV1	Additional Server (adds 1 server to corp. license)

Highlighted Features:

- A** Customize text fields to fit your needs
- B** Input digital photos and identify control points
- C** Customize icons and colors as desired
- D** Use predefined instructions or type in your own text

For More Information on Lockout Pro™ Software see pg. 420



Take Control of Your Network

**Know what you have,
where it's located, and
what it's connected to...**

Document.



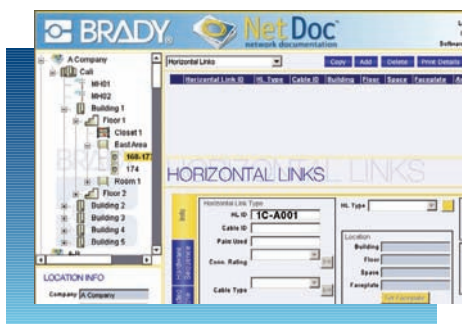
Label.



Manage.



Stop following a tangle of cables around the office. NetDoc™ Network Documentation and Cable Management software allows you to easily document every aspect of your network, including horizontal and backbone cables, hardware, assets, pathways, locations, users and more.



Document Your Network:

NetDoc software is a web-enabled application that gives you point-and-click management of your network infrastructure.

- Documentation wizards
- Spreadsheet importation tool
- Attachment capabilities including visio, autocad, digital photos, PDF's, and more.
- Import test results

Label Your Network:

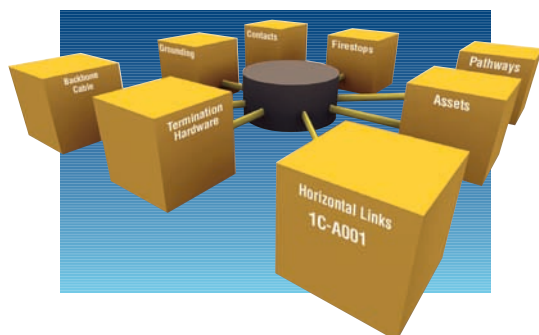
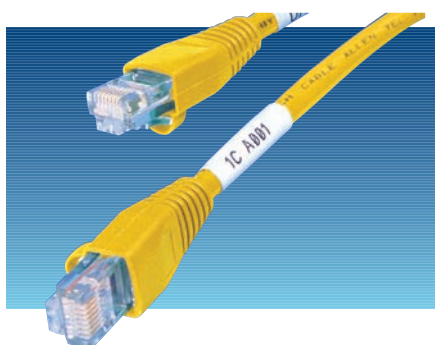
Print directly to the Brady TLS2200® Thermal Transfer Printer or to laser, ink jet, and Brady thermal transfer printers for high volume printing.

- Seamless integration with LabelMark™ Labeling Software provides a complete ANSI/TIA/EIA-606A compliant solution
- Fast, easy labeling of new and existing cables, ports, and components

Manage Your Network:

Find it, fix it, use it, move it – whatever you need to do starts with knowing. The NetDoc solution puts the information where you need it.

- User- and date-stamping on all notes
- Customizable fields with flexibility in managing the network
- Log in security
- Web-enabled solution



Part Number	Description
ND-1 User	NetDoc Single User License Package (LabelMark Included)
ND-5 User	NetDoc 5 User License Package (LabelMark Included)
ND-SITE	NetDoc Unlimited License Package (LabelMark Included)

