

SecurALERT™ Badges

SecurAlert™ Adhesive Back Badges



To activate, apply "front" badge to the "back" badge and the expiration begins

- SecurAlert™ adhesive-back badges expire automatically to prevent unauthorized reuse.
- Choose badges that expire in one day or one week
- Once the "front" badge is placed on the "back" badge, the expiration begins and cannot be reversed.
- Badges are 2" x 3"
- 500 front & back badge parts per package

Catalog Number	Description
95688	Visitor - One day expiration
95689	Contractor - One day expiration
95690	Temporary - One day expiration
95673	Visitor - One week expiration
95674	Contractor - One week expiration
95675	Temporary - One week expiration

One Step SecurAlert™ Badges



- Pre-assembled for your convenience
- Activated by removing the liner between the "front" badge and the "back" badge
- Contractor and Visitor headers available
- Badges are 2" x 3"
- Badges expire after 24 hours
- 500 front & back badge parts per package



Catalog Number	Description
95635	Visitor
95636	Contractor

SecurAlert™ Color Card Clip-On Badges



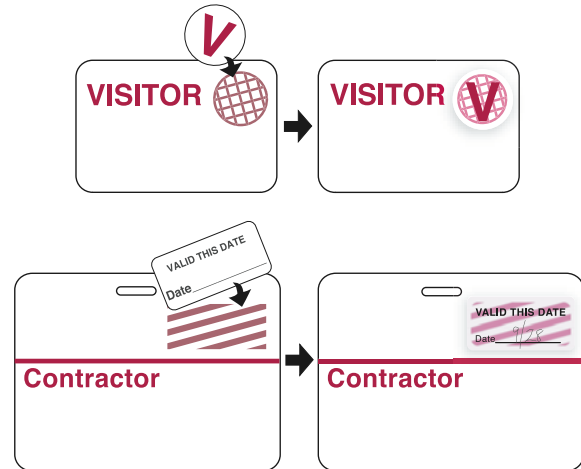
- Low-cost clip-on alternative to self-adhesive badges.
- 3" x 3" slotted cards
- Available in 5 different colors
- 500 front & back badge parts per package

Legend	Color	One Day	One Week
Visitor	Red	95643	95648
Visitor	Blue	95644	95649
Visitor	Yellow	95645	95650
Visitor	Green	95646	95651
Visitor	White	95647	95652
Contractor	Red	95653	95658
Contractor	Blue	95654	95659
Contractor	Yellow	95655	95660
Contractor	Green	95656	95661
Contractor	White	95657	95662
Temporary	Red	95663	95668
Temporary	Blue	95664	95669
Temporary	Yellow	95665	95670
Temporary	Green	95666	95671
Temporary	White	95667	95672

Clip-On Badges with TIMEtoken® or TIMEspot®

- Low cost clip-on paper badges are available with time-dependent “grids” already printed on them.
- Apply the TIMEtoken® or TIMEspot® badge over the printed “grid” to start expiration.
- Badges expire in one day
- TIMEspot® badge is 7/8" on 3" x 3" back, TIMEtoken® badge is 1" x 2" on a 3" x 4" back.

Catalog Number	Description
95637	TIMEspot® Visitor
95638	TIMEspot® Contractor
95639	TIMEspot® Temporary
95640	TIMEtoken® Visitor
95641	TIMEtoken® Contractor



CARDclip® Clear Badge Clip

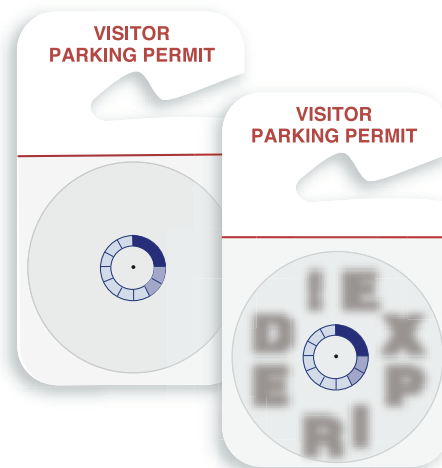
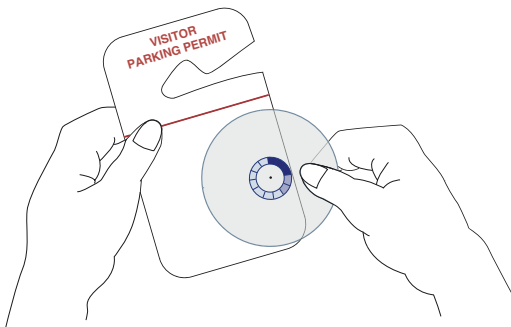
- One piece soft plastic clip for short-term use
- Low cost
- Kind to clothing
- Slips into a standard slot for quick assembly
- 500 clips per package

Catalog Number	Description
95676	CARDclip®

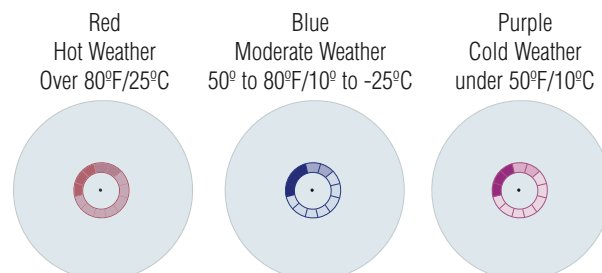


Self-Expiring Parking Permits

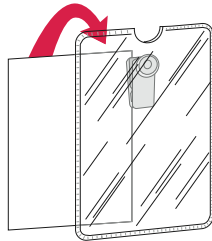
- Temporary parking permits expire during the day by progressively revealing the letters E-X-P-I-R-E-D.
- Expiration process starts once the self-adhesive cover is applied
- Permits are 5" x 3"
- 500 permits per package



Catalog Number	Description
95677	Visitor - Red
95678	Visitor - Blue
95679	Visitor - Purple
95680	Temporary - Red
95681	Temporary - Blue
95682	Temporary - Purple



Badges & Lanyards



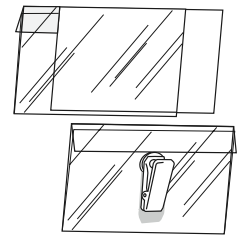
► Vinyl Badge Holder With Insert

- Versatile and Reusable
- Heavy duty vinyl with open top on short side
- Nickel-plated clip has no teeth to harm clothing
- White insert cards included

Catalog No.	Insert Size
95049	2"w x 3"h
95050	2¼"w x 3½"h
95051	2⅞"w x 4"h
95052	3"w x 4"h

Extra Inserts - 100 per package

Catalog No.	Insert Size
95053	2"w x 3"h
95054	2¼"w x 3½"h
95055	2⅞"w x 4"h
95056	3"w x 4"h



► Acetate Badge Holder with Insert

- Economical & easy to use
- Folded clip-on holders made of extra heavy .010 clear PVC vinyl with open ends
- White insert cards included

Catalog No.	Insert Size
95057	3"w x 2"h
95058	3½"w x 2¼"h
95059	4"w x 2⅞"h
95060	4"w x 3"h



► Magnetic Badge Holder

- Great alternative to pin or clasp badge holders
- The Magnetic Badge Holder simply folds over pockets or lapels without ruining clothing
- Slip badge into clear plastic window
- The horizontal style holds 3½"w x 2¼"h badges; the vertical holds 2⅜"w x 3⅜"h badges
- Made of heavy gauge black vinyl
- Price each

Catalog No.	Description
95065	Horizontal
95066	Vertical

Fold over pocket to secure into place.



► Retractable Badge Holder

- Attach to belt or clothing
- Retractable Badge Holder with clip is the ideal alternative to bull dog clips which may damage clothing
- Clip attaches to belt or pocket while the heavy-duty nylon cable with fastener attaches to badge
- Available in 5 colors
- Price each

Catalog No.	Color
95071	Blue
95072	Red
95073	White
95074	Gray
95075	Black

Badge retracts when released shown with Custom Plastic Badge



► Color-Coded Horizontal Badge Holders

- Color coding makes identification a snap!
- Horizontal Badge Holders are ideal for business cards or name inserts
- They are 3¾"w x 3"h
- Available in 4 colors for convenient color coding
- 30 per package

Catalog No.	Color
95067	Yellow
95068	Green
95069	Red
95070	Blue

D

Security

Badges & Lanyards

► Beaded Neck Chain

- Great alternative to badge fasteners or clips
- Lightweight chains allow badges or ID to be worn around the neck instead of fastened to clothing
- Available in packages of 50. Choose from 36" metal or 38" plastic (Red, Royal Blue, Navy Blue, Green, Clear, White, or Black)

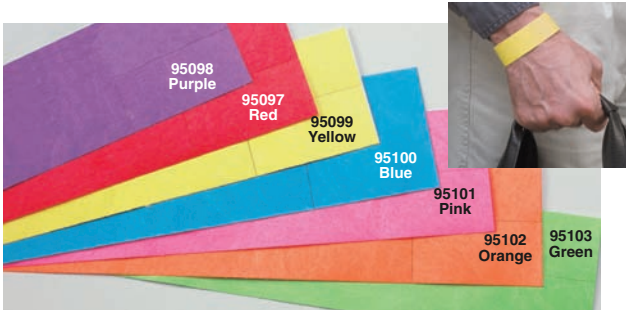
Catalog No.	Color
95081	Metal
95082	Red
95083	Blue
95084	Navy
95085	Green
95086	Clear
95087	White
95088	Black



► Lanyards

- Give your credential system a professional touch
- The easy, professional way to attach badges. Lanyards are constructed of durable cloth and can be reused for future events. 19" lanyards have a snap-swivel hook and adjustable bead.
- Available in Black, Blue, Green, Orange, Red, White, or Yellow.

Catalog No.	Color
95089	Black
95090	Blue
95091	Green
95092	Orange
95093	Red
95094	White
95095	Yellow



► Security Tyvek Wristbands

- Tamper-resistant to ensure security
- Tyvek Wristbands are an economical way to keep track of personnel, patients or visitors
- Made of ultra-strong, waterproof Tyvek, these 1" wide wristbands will not tear or stretch.
- Secure adhesive closure that can not be reused
- All wristbands are consecutively numbered (factory chooses starting number)
- Choose from 7 solid colors

► Visitor Log System

- One-write sign-in system simplifies security control
- This system consists of a special clipboard with badges clipped to the board, over which is placed a carbon-backed sign-in log sheet



1. The visitor fills in the data in one of the 12 boxed forms on the log sheet. This simultaneously marks through the spot-carbon on the log sheet onto the self-adhesive visitor badge.



2. Lift up the log sheet and remove the badge for the visitor.



3. The timing dot is applied to the badge.



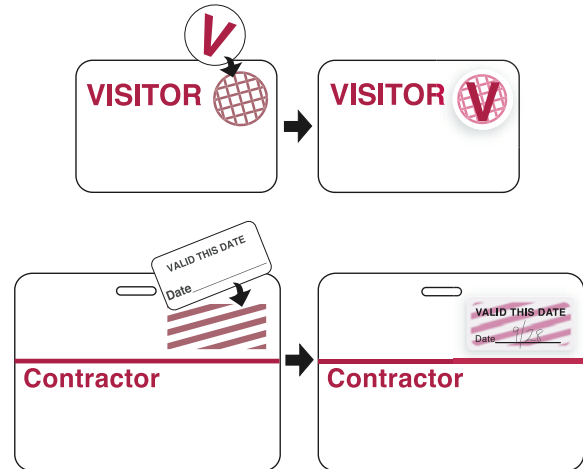
4. The badge expires automatically after 24 hrs.

Style No.	Description
95107	Visitor Log System -Includes 300 Badges, 300 Time Spots, 25 Log Sheets (300 records), and one Clipboard
95108	Clipboard
95109	Badges-Package of 300
95110	One Day Blue Time Spots-Package of 300
95111	Log Sheets-Package of 25 Sheets (300 records)

Clip-On Badges with TIMEtoken® or TIMEspot®

- Low cost clip-on paper badges are available with time-dependent “grids” already printed on them.
- Apply the TIMEtoken® or TIMEspot® badge over the printed “grid” to start expiration.
- Badges expire in one day
- TIMEspot® badge is 7/8" on 3" x 3" back, TIMEtoken® badge is 1" x 2" on a 3" x 4" back.

Catalog Number	Description
95637	TIMEspot® Visitor
95638	TIMEspot® Contractor
95639	TIMEspot® Temporary
95640	TIMEtoken® Visitor
95641	TIMEtoken® Contractor



CARDclip® Clear Badge Clip

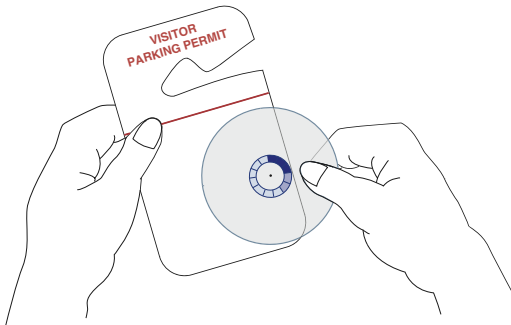
- One piece soft plastic clip for short-term use
- Low cost
- Kind to clothing
- Slips into a standard slot for quick assembly
- 500 clips per package

Catalog Number	Description
95676	CARDclip®

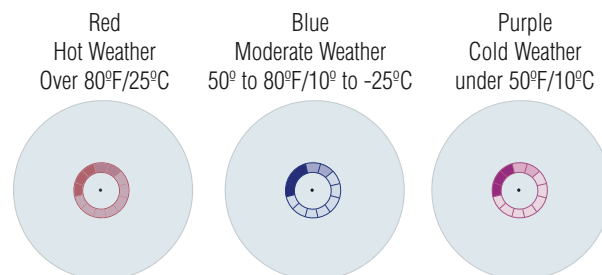


Self-Expiring Parking Permits

- Temporary parking permits expire during the day by progressively revealing the letters E-X-P-I-R-E-D.
- Expiration process starts once the self-adhesive cover is applied
- Permits are 5" x 3"
- 500 permits per package

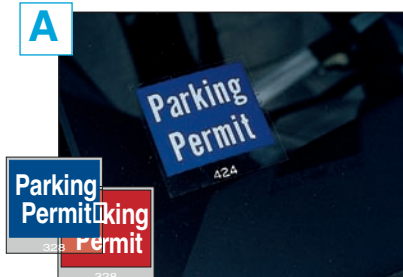


Catalog Number	Description
95677	Visitor - Red
95678	Visitor - Blue
95679	Visitor - Purple
95680	Temporary - Red
95681	Temporary - Blue
95682	Temporary - Purple



Parking Permits

A



Self-Adhesive Vinyl Windshield Decals

B



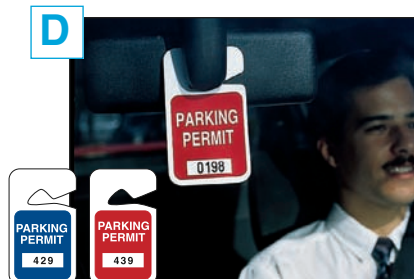
Rearview Mirror Decals

C



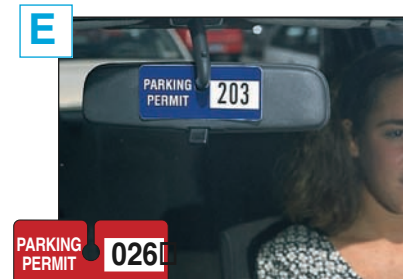
Self-Adhesive Vinyl Bumper Decals

D



Rearview Mirror Hanging Tags

E



Rearview Mirror Hanging Tags

Stock Parking Permits

- Standard wording gives you an economical yet durable permit

A

Self-Adhesive Vinyl Windshield Decals

Size: 3" w x 3" h

Style No.	Color	Number Sequence
95199	Blue	001-100
96230	Blue	101-200
96231	Blue	201-300
96232	Blue	301-400
96233	Blue	401-500
95200	Red	001-100
96234	Red	101-200
96235	Red	201-300
96236	Red	301-400
96237	Red	401-500

B

Rearview Mirror Decals

Size: 2" w x 1½" h

Style No.	Color	Number Sequence
95203	Blue	001-100
96238	Blue	101-200
96239	Blue	201-300
96240	Blue	301-400
96241	Blue	401-500
95204	Red	001-100
96242	Red	101-200
96243	Red	201-300
96244	Red	301-400
96245	Red	401-500

C

Self-Adhesive Vinyl Bumper Decals

Size: 4¾" w x 2¾" h

Style No.	Color	Number Sequence
95207	Blue	001-100
96246	Blue	101-200
96247	Blue	201-300
96248	Blue	301-400
96249	Blue	401-500
95208	Red	001-100
96250	Red	101-200
96251	Red	201-300
96252	Red	301-400
96253	Red	401-500

Size: 3½" w x 2" h

Style No.	Color	Number Sequence
95209	Blue	001-100
96254	Blue	101-200
96255	Blue	201-300
96256	Blue	301-400
96257	Blue	401-500
95210	Red	001-100
96258	Red	101-200
96259	Red	201-300
96260	Red	301-400
96261	Red	401-500

PRICE: Per Package of 100 Permits. (Sold in full packages only).

Description	Size
A Self-Adhesive Vinyl Windshield Decals*	3" w x 3" h
B Rearview Mirror Decals*	2" w x 1½" h
C Self-Adhesive Vinyl Bumper Decals*	4¾" w x 2¾" h
C Self-Adhesive Vinyl Bumper Decals*	3½" w x 2" h
D Rearview Mirror Hanging Tags*	2¾" w x 4¾" h
E Rearview Mirror Hanging Tags*	4¾" w x 2" h

D

Rearview Mirror Hanging Tags

Size: 2¾" w x 4¾" h

Style No.	Color	Number Sequence
95201	Blue	001-100
96262	Blue	101-200
96263	Blue	201-300
96264	Blue	301-400
96265	Blue	401-500
96266	Blue	501-600
96267	Blue	601-700
96268	Blue	701-800
96269	Blue	801-900
96270	Blue	901-1000
95202	Red	001-100
96271	Red	101-200
96272	Red	201-300
96273	Red	301-400
96274	Red	401-500
96275	Red	501-600
96276	Red	601-700
96277	Red	701-800
96278	Red	801-900
96279	Red	901-1000

E

Rearview Mirror Hanging Tags

Size: 4¾" w x 2" h

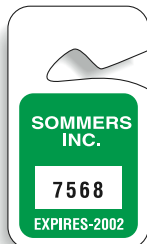
Style No.	Color	Number Sequence
95205	Blue	001-100
96280	Blue	101-200
96281	Blue	201-300
96282	Blue	301-400
96283	Blue	401-500
96284	Blue	501-600
96285	Blue	601-700
96286	Blue	701-800
96287	Blue	801-900
96288	Blue	901-1000
95206	Red	001-100
96289	Red	101-200
96290	Red	201-300
96291	Red	301-400
96292	Red	401-500
96293	Red	501-600
96294	Red	601-700
96295	Red	701-800
96296	Red	801-900
96297	Red	901-1000

► Hanging Parking Tags

- A great choice for short-term and visitor parking
- Available in semi-rigid (.020) white plastic which resists warping in the sun and oven-like car interiors or white cardstock for a more economical alternative.
- All tags available with $\frac{3}{8}$ " black numbering
- Size $4\frac{3}{4}$ "h x $2\frac{3}{4}$ "w
- Standard font is **HELVETICA MEDIUM**



Style 1



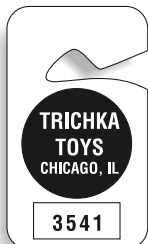
Style 2



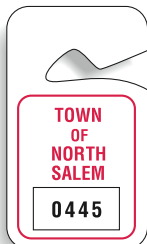
Style 4



Style 3

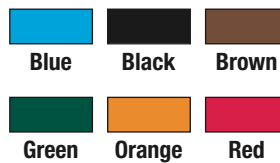


Style 5



Style 6

Available Ink Colors:



Style 8



Style 7

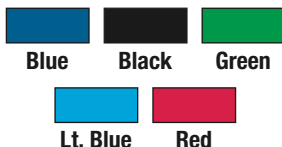
Choose cardstock material for a more economical alternative.

CUSTOM ORDER: Specify Style No., Material (White Plastic or White Cardstock), Starting Number, Copy Color (Red, Green, Orange, Blue, Black, Brown), and Exact Wording.
CST1134

► Hanging Rearview Mirror Tags

- Identify vehicles with permits that won't obstruct drivers view
- Non-abrasive plastic tags can be easily transferred from vehicle to vehicle
- Tags are $4\frac{3}{4}$ "w x 2"h
- Consecutively numbered with large easy-to-read black numbers (max.4 digits)
- Standard font is **HELVETICA MEDIUM**

Available Ink Colors:



CUSTOM ORDER: Specify background color, color of letters, Numbering and Quantity.
CST1135

DuraGuard® Property Identification Tags



► DuraGuard® Property Identification Tags

The most durable and efficient way to track and identify assets. Use DuraGuard® to identify everything from computers, office equipment, desks, chairs, tables and file cabinets... to tools, fire extinguishers, machinery and electrical appliances.

Security Control

- Make employees accountable for assets with sign-in and sign-out procedures
- Recover lost or stolen equipment

Financial Control

- Identify property and expedite insurance claims in case of fire, loss or theft
- Track your fixed assets

Inventory Control

- Track inventory as assets are moved
- Maintain tools and equipment with tags dated for routine servicing

Colors Available:



Dark Blue



Red



Green



Light Blue



Burgundy



Black



Customize It
see page 143

Put DuraGuard Tags to work in your Asset Management Plan today!

- Tamper-resistant, multi-layered metalized polyester material
- Laminate finish protects against scratching, solvents, oil & grease
- Universal permanent adhesive is specially formulated for a wide variety of surfaces
- Withstands temperatures -40° to 293° F
- Indoor/Outdoor use
- Custom wordings & logos with no setup or plate charges
- Optional bar codes – choose either Code 39 or Code 128 symbology for alphanumerics or numerics, Interleaved 2 of 5 for numeric only
- Tags supplied on easy-to-handle strips of 10
- 1-12 digit consecutive numbering
- Apply tags to a clean dry surface (min. 50° F temperature recommended)



Add your company logo for no additional charge.

Shown actual size 2"w x ¾"h.



Available with alpha or numeric bar codes.

Shown actual size 1½"w x ¾"h



Universal adhesive sticks to a wide variety of surfaces.

Tamper Evident DuraGuard® Property I.D. Tags

- Leaves a revealing checkerboard pattern when removed
- Constructed of durable metalized polyester
- Wording, bar code and numbering can not be rubbed or scratched off
- Supplied on strips of ten





DURAGUARD TAG ORDER FORM

Please copy this order form, and use a separate form to order each style of DuraGuard Tag that you require. Order in increments of 100. If you have any questions, contact your distributor or call us toll-free at 1-888-272-3946.

1
SIZE

(Check appropriate size)

- ☐ 1½" x ¾"
- ☐ 2" x ¾"

2
ADHESIVE

(Check appropriate adhesive)

- ☐ universal permanent adhesive (B-181)
- ☐ tamper evident adhesive (B-442)

3
COLOR

(Check appropriate color)

- ☐ dark blue
- ☐ red
- ☐ light blue
- ☐ green
- ☐ black
- ☐ burgundy

4
FONT

Helvetica Bold

5
NUMBERING

- ☐ no numbering required
- ☐ Beginning number/sequence _____

6
BAR CODES

(Check one)

- ☐ no bar code required
- ☐ Code 39 (alphanumerics or numerics)
- ☐ Code 128 (alphanumerics or numerics)
- ☐ Interleaved 2 of 5 (numeric only)

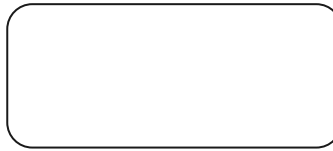
7
ADDITIONAL OPTIONS

(Check all that apply)

- ☐ none
- ☐ company logo (supply artwork)
- ☐ other _____

8
WORDING & LAYOUT

(sketch)

DURAGUARD® TAG SKETCH
SKETCH LAYOUT

9
QUANTITY

(minimum = 300 tags...30 strips of 10 tags)

10
PRICING PER 100 TAGS

Contact your local Brady Distributor for pricing information.

UNIVERSAL ADHESIVE
CST1028
Size

- 1½" x ¾"
- 1½" x ¾" with bar code
- 2" x ¾"
- 2" x ¾" with bar code

TAMPER EVIDENT ADHESIVE
CST1029
Size

- 1½" x ¾"
- 1½" x ¾" with bar code
- 2" x ¾"
- 2" x ¾" with bar code

FAX to your Local Brady Distributor

D

Security

BradyGuard® Property Plates

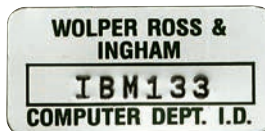
BradyGuard® Property Plates

- Ideal for asset identification in office or manufacturing environments
- Durable property nameplates are a crucial part of an effective asset management program. BradyGuard Property Name Plates feature:
 - High quality, .003 anodized aluminum
 - Consecutive numbering
 - Colors, wordings and designs actually etched permanently into the aluminum
 - Use indoors or out
 - Resistant to solvents, abrasions, weather and extreme temperatures

Plates are supplied in strips and are kiss-cut to the liner for easy removal and fast application. Apply to a clean dry surface.



2" x 1 1/4"



1 1/2" x 3/4"



Positive printed plate shown (Wording in Silver)
2" x 3/4"



Customize tags with your choice of:

Three Sizes

- 1 1/2" x 3/4" are 10 plates up on a strip
- 2" x 3/4" are 10 plates up on a strip
- 2" x 1 1/4" are 6 plates up on a strip

Consecutive Numbering

- Permanently debossed, black-filled consecutive numbering
- A minimum of 5 digits is required (0s will be added in front of numbering to total 5 if necessary)
- A maximum of 10 digits for 1 1/2" x 3/4" and 2" x 3/4" name plates
- A maximum of 6 digits for 2" x 1 1/4" name plates
- No numbering is also available

Background Finish

- All matte
- All gloss

Your Custom Wording

- Etched with your wording and logo
- Please specify if "PROPERTY OF" should be included

Permanent Adhesive

- 3M #467 is for most smooth non-plastic surfaces (-40°F to 350°F)
- 3M #468 is for rough or textured non-plastic surfaces (-40°F to 350°F)
- 3M #9471 is for smooth plastic (-40°F to 250°F)
- 3M #9472 is for textured plastic (-40°F to 250°F)

** For indoor use only. All other colors suitable for outdoor or indoor use.
* Recommended for best long-term outdoor use.



BRADYGUARD® TAG ORDER FORM

Please copy this order form, and use a separate form to order each style of BradyGuard® tag that you require. Order in increments of 100. If you have any questions, contact your distributor or call us toll-free at 1-888-272-3946.

1
SIZE

(Check appropriate size)

- ☐ 1½" x ¾"
☐ 2" x ¾"
☐ 2" x 1¼"

2
ADHESIVE

(Check appropriate adhesive)

- ☐ 3M #467 – for smooth non-plastic surfaces (-40° F to 350 F)
☐ 3M #468 – for rough or textured non-plastic surfaces (-40° F to 350 F)
☐ 3M #9471 – for smooth plastic (-40° F to 250 F)
☐ 3M #9472 – for textured plastic (-40° F to 250 F)

3
COLOR

(Check appropriate color)

- | | |
|-------------------------------------|------------------------------------|
| <input type="checkbox"/> dark blue | <input type="checkbox"/> flame red |
| <input type="checkbox"/> dark red | <input type="checkbox"/> brown |
| <input type="checkbox"/> light blue | <input type="checkbox"/> bronze |
| <input type="checkbox"/> gold | <input type="checkbox"/> yellow |
| <input type="checkbox"/> black | <input type="checkbox"/> purple |
| <input type="checkbox"/> dark green | |

4
FONT

Helvetica Bold

5
NUMBERING (6 characters max.)

- ☐ No numbering required
☐ Beginning (5 digits required) number/sequence _____

6
BACKGROUND FINISH

(Check one)

- ☐ matte
☐ gloss

7
ADDITIONAL OPTIONS

(Check all that apply)

- ☐ none
☐ company logo (supply artwork)
☐ other _____

8
WORDING & LAYOUT

(sketch)

BRADYGUARD® TAG SKETCH
SKETCH LAYOUT:

9
QUANTITY

(minimum = 300 tags...30 strips of 10 tags)*

* 2" x 1¼" are 50 strips of 6 tags

10
PRICING
CST1031

Contact your local Brady Distributor for pricing.

FAX to your Local Brady Distributor
D

Security

Seals



► Padlock Plastic Seals

- Tamper evident and corrosion resistant
- Seals manufactured from durable polypropylene and available with stainless steel wire hasps
- Seal body will blush if violated
- Tinuvin added for UV resistance
- Seals are heat stamped with seven-digit, sequential numbers that are factory specified
- Standard seals are stamped "SEAL"
- Sold in packages of 100, Min. order 500

95168	95174	95173	95172
Black	White	Red	Orange
95170	95171	95169	95175
Gray	Green	Blue	Yellow

Customize It



► Plastic Poly-Lok™ Seals

- Customized seals, with your company name and consecutive numbering
- Manufactured from tamper-evident polypropylene, which blushes if tampering occurs
- Poly-Loks cannot be reattached if broken
- Available in mats of ten, in 5" and 7½" lengths All have breaking strengths of 35-45 pounds
- Five-inch seals are embossed with four characters For 7½" seals, specify numbering sequence (7 numbers) and company name (up to 17 characters) Available in eight colors
- 1000 seals per package

Yellow	Green	Red	Black
Blue	Maroon	Gray	Orange

CST1147

Specify Color, Starting Number, Wording and Quantity. For number sequence, color or wording change, price as separate orders.

► Stock Plastic Poly-Lok™ Seals

- Tamper-resistant Poly-Loks are 7½" long, embossed with the wording "SEAL", and are consecutively numbered
- Ship in mats of ten for convenience and better accountability

95193	95194	95195	95196
Blue	Green	Red	Yellow

► Stock Metal Ball Seals

- Stock Metal Ball Seals have the same construction as Color-Coded Metal Ball Seals except they are supplied with Consecutive Numbering (factory chooses starting number) and the word "SEALED" already embossed
- 100 Seals per package



Catalog No. 95197

► Rolled Edge Ball Seals

- Durable strength with non-sharp edges
- Supplied with rounded edges to help prevent accidental cuts
- 8½", tin-plated metal seals come with "SEAL" and consecutive numbering (factory chooses the starting number) embossed on them.
- 100 Seals per package



Catalog No. 95198

► Color-Coded Metal Ball Seals

- Prevent tampering and identify lot shipments at a glance
- Durable, tin-plated, 8½" metal seals have a 125 lb. tensile strength
- Available in five colors
- 1000 Seals per package

Blue	Green	Orange	Red	Yellow



Seal truck & trailer doors

CST1148

Specify Color, Number Sequence (up to 6 Digits), Wording (up to 17 Characters, and Quantity.



Customize It

► Tamper-Evident Shipping Tape

- Give added security to your packages.
- Tamper-evident Kraft paper tape is wider than normal 3" carton sealing tape.
- When someone attempts to remove the tape, a red strip appears on the carton which cannot be covered with ordinary tape.
- To use, wet the sealing tape, cut and apply.
- 3¼" x 150 yards.



Prevent and monitor package tampering.

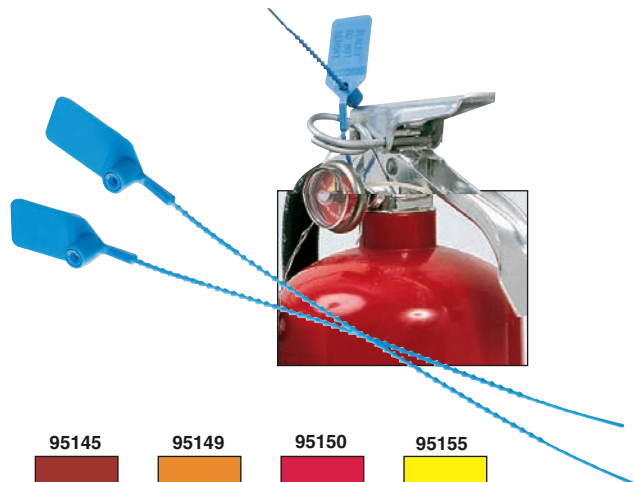
Catalog No. 95048

D

Security

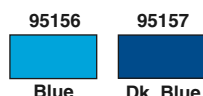
► Pull-Tite Seals

- Deters entry, yet easily removed
- Breaking strength of 10-14 pounds
- Pull-Tite Seals are one of the few security seals approved for use by Underwriter's Laboratories for fire extinguishers and safety doors
- Ideal for use with courier pouches, canisters or cabinets that contain valuables or sensitive documents
- Nine inches long, with ten seals per mat, undecorated Pull-Tite Seals are embossed "SEALED DO NOT REMOVE"
- 100 Seals per package



► Secure-Tite™ Seals

- Strong, 11-1/2" strap seal for numerous applications
- Manufactured from tough polypropylene, which blushes if tampered with
- Ideal for plastic and cloth bags that contain valuables, tote boxes and other applications that require strength and durability
- Available in mats of 10
- Secure-Tites are heat stamped "SEAL" and are consecutively numbered by factory
- Prongs are added to increase security
- 1000 Seals per package



► Ring-Loc Drum™ Seals

- Specifically designed to ensure fiber drum integrity
- Avoid product contamination
- Available in two materials; polypropylene, which will blush if tampered with, and nylon, which affords greater strength
- Available in two styles; with a shroud, for Greif Brothers' fiber drums, and without, for Sunoco fiber drums
- Seals are applied with two fingers and removed with a simple cutting tool
- 100 per package



Catalog No.	Description
95158	Blue Nylon Ring-Loc Drum Seals w/ shroud
95159	Blue Nylon Ring-Loc Drum Seals w/out shroud
95160	Red Nylon Ring-Loc Drum Seals w/ shroud
95161	Red Nylon Ring-Loc Drum Seals w/out shroud
95162	Blue Polypropylene Ring-Loc Seals w/ shroud
95163	Blue Polypropylene Ring-Loc Seals w/out shroud
95164	Red Polypropylene Ring-Loc Seals w/ shroud
95165	Red Polypropylene Ring-Loc Seals w/out shroud

► Lead Seals

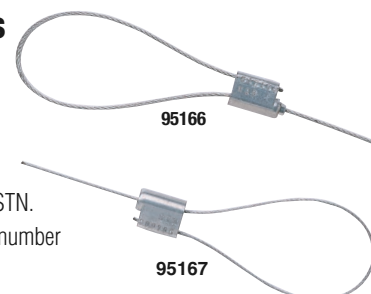
- 12" wires with pre-fitted lead seals fit easily around pipes or valves
- Use with Hand Sealing Press
- Available in copper and monel
- Standard package: 250
- 31 gauge 7/16" diameter



Style No.	Material
23301	Copper
23302	Monel

► Cable Lock Seals

- Heavy steel seals have 12" cable lengths
- The steel head has 6 serialized numbers for inventory or tracking
- Seals have imprinted letters STN.
- Factory chooses the starting number
- 100 per package



Catalog No.	Description	Tensile Strength
95166	1/16" thick	480 lbs.
95167	3/32" thick	800 lbs.



► Simulated Surveillance Camera

- A commercial quality high impact styrene camera housing and a rapid flashing red "ON" light
- For indoor or outdoor use
- Installs in minutes requiring no wiring
- Operates on (2) C batteries (not included)

Catalog No.	Description
95140	Stationary

Deter theft and vandalism. Outwardly, this simulated surveillance camera is indistinguishable from "live" cameras.



► TourWatch XT Software

TourWatch XT is a computerized guard-tour management system that records tours and inspections performed by security officers. Officers use portable data collection devices to document all security checkpoints visited. The date, time, and location of each checkpoint are recorded simply by scanning a bar code label. TourWatch XT provides a variety of reports showing where your officers were, when, what they observed, and any actions taken. Reports include: Route Report, Exception Report and Missed-Checkpoint Report. TourWatch XT's tamper-proof records assist in proving compliance with OSHA, NFPA, JCAHO, and other regulatory agencies.

Minimum System Requirements:

- Pentium 500 MHz minimum
- 128 MB RAM minimum
- Windows 98, Windows NT 4.0, Windows 2000 or Windows XP Workstation
- 200 MB of free space on the hard disk (500 MB recommended)

Contact your local Brady distributor for more information



► Safety Padlocks

- Compact and lightweight
- Enhanced impact resistance
- Superior temperature, chemical and corrosion resistance
- Nonconductive, nonsparking body
- Available in 8 high-visibility colors
- Ribbed design for easier gripping and handling
- Shackle clearance: 1 1/2", shackle diameter: 1/4"
- Lock body: 1 3/4"H x 1 1/2"W x 4/5"D
- Locks come standard with English, French and Spanish language labels
- Locks come keyed different or keyed alike.

Brady Safety Padlocks

1 Padlock/Package Catalog No.	6 Padlocks/Package Catalog No.	Color
99552	51339	Red
99556	51344	Blue
99564	51345	Green
99570	51346	Yellow
99576	51347	Orange
99580	51353	Black
101958	101956	Brown
104919	104916	Purple

May We Also Suggest...

More Locks and devices see pg 393